



Thank you for downloading this floor plan / elevation from HousePlansXpress.com. We sincerely hope this will assist you in choosing a home plan that will best suit you and / or your family's needs.

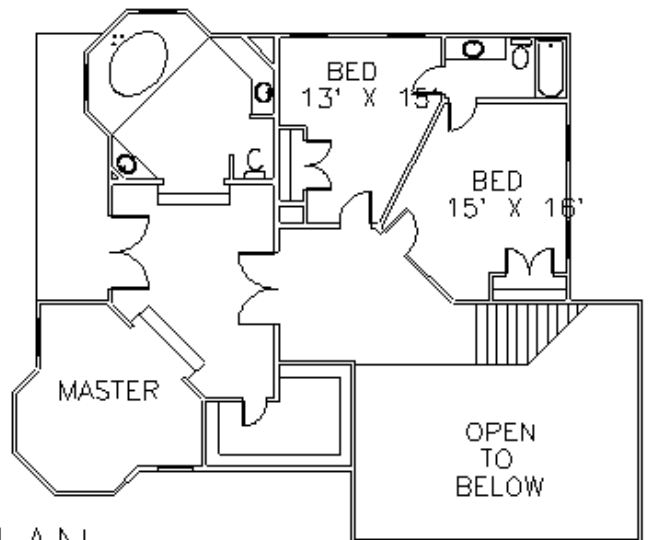
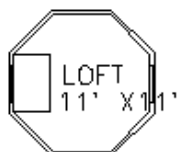
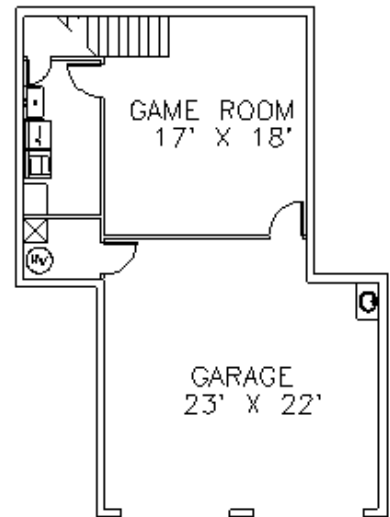
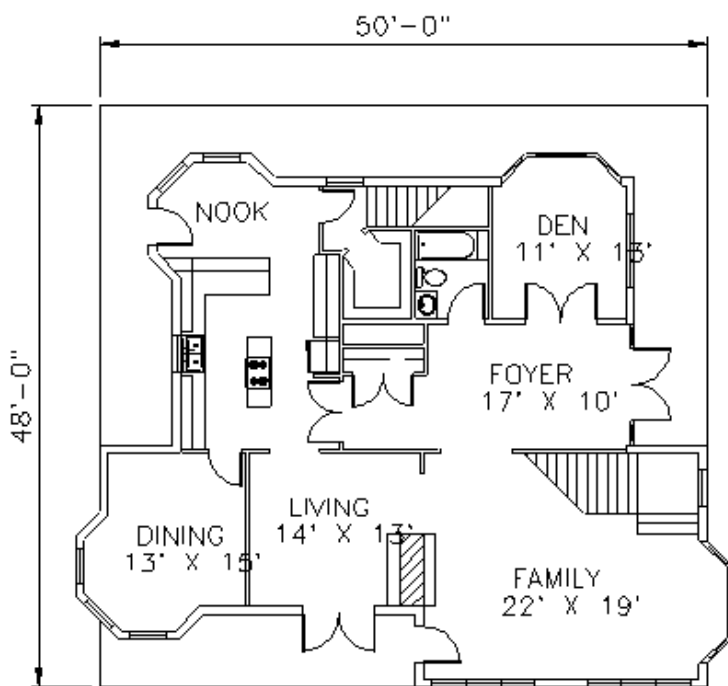
The plan images shown on our website and in this .pdf file are general representations and are not to scale. They do not contain details and the dimensions shown are approximate. Also, due to the multiple conversion processes required to create these images, distortions are introduced and image quality is compromised.

Please realize that our full plan sets, which are printed from the original CAD files, are of very high quality and contain all necessary details and accurate dimensions for use in the construction process.

Also remember that our plans are customized for you. No additional charges apply for customizing unless you increase the square footage of the home by adding a room or moving exterior walls. Please return to our website for more information on ordering and customizing plans. <http://www.houseplansxpress.com>

FOUR BEDROOM/THREE BATH

D3375



FLOOR PLAN

3375 SQ FT LIVING